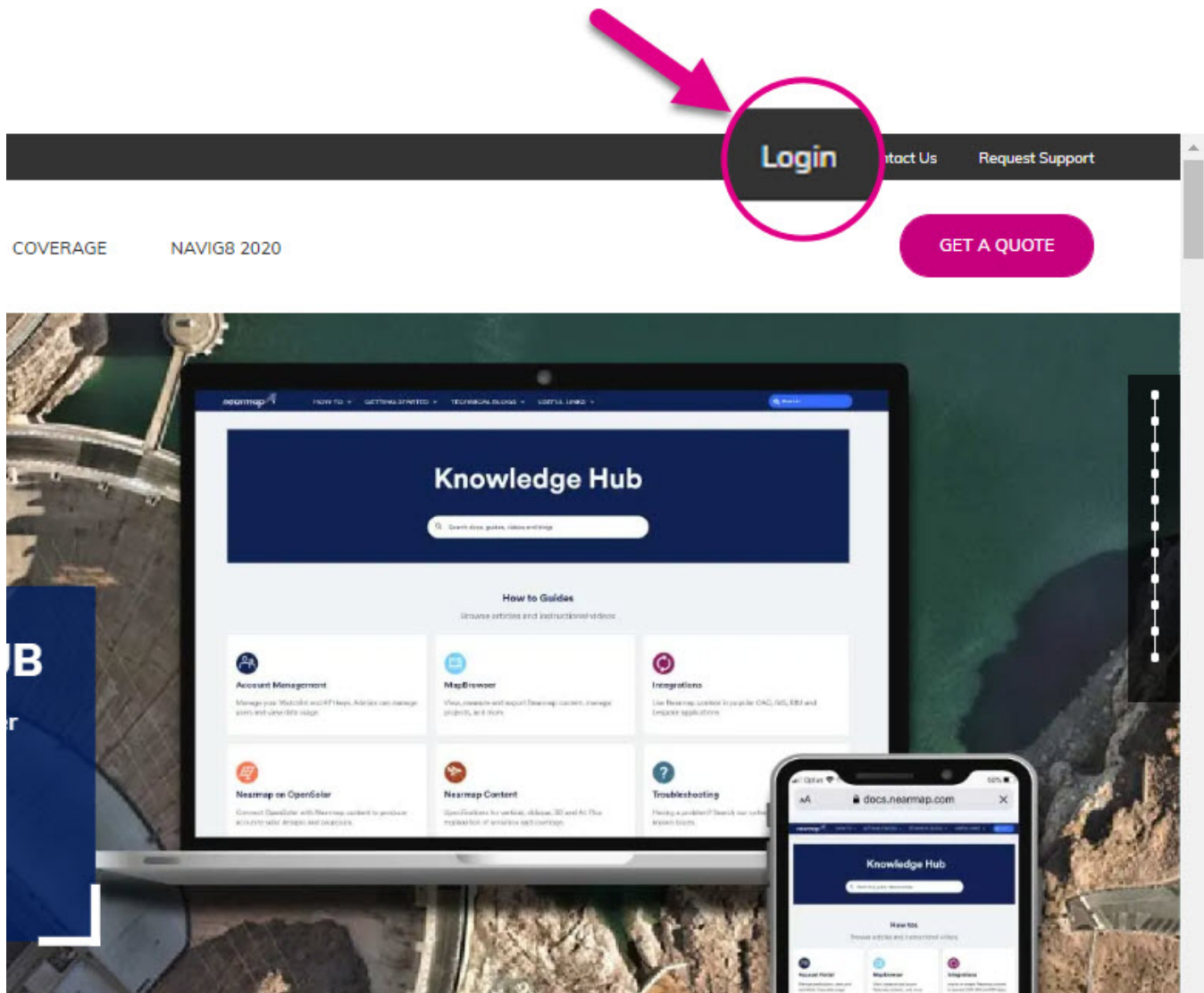


Access MapBrowser

You can access MapBrowser several ways:

1. From nearmap.com
2. Using the MapBrowser URL
3. From a bookmarked session
4. From a shared URL
5. From Self Service Portal
6. From Knowledge Hub
7. From MapBrowser Classic

1. From nearmap.com



2. Using the MapBrowser URL

<https://apps.nearmap.com/maps/>

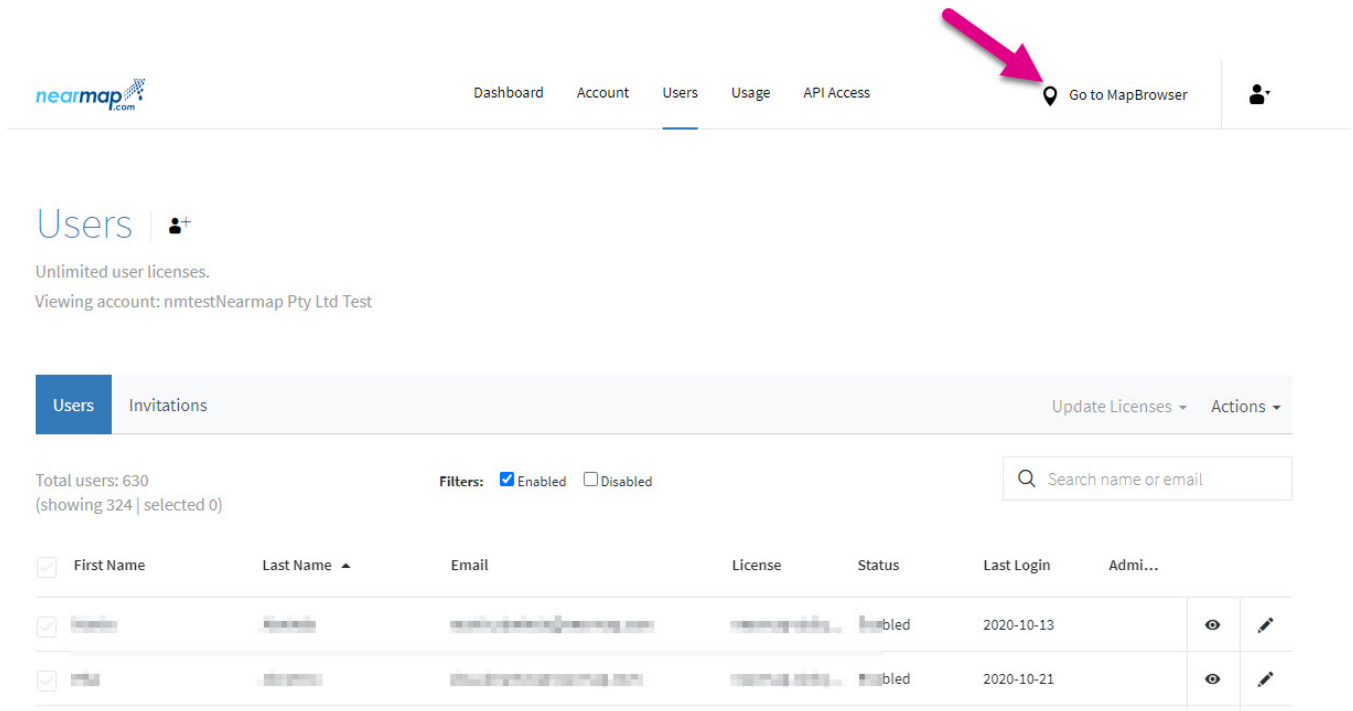
3. From a bookmarked session

Copy the URL from any MapBrowser session and paste it into a new MapBrowser Session.

4. From a shared URL

You can share any MapBrowser link with another MapBrowser user who will be able to view the same location, zoom, rotation, basemap, etc. (provided they have access to this geographical area, and to the same content type). Find out more: [Share the Map Location](#).

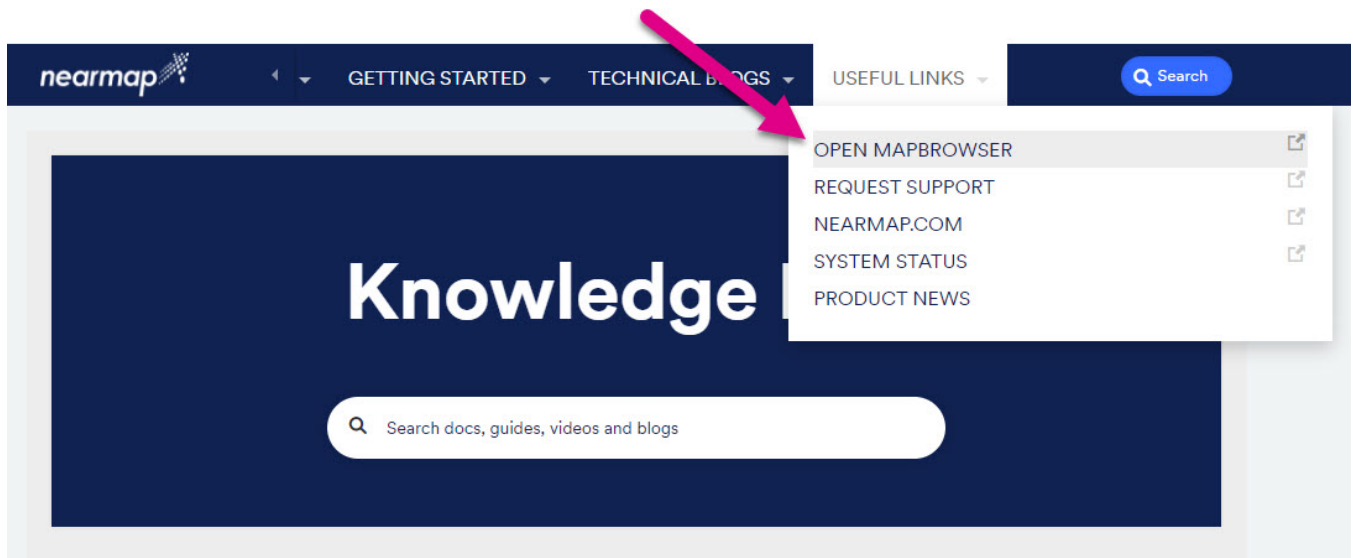
5. From Self Service Portal



The screenshot shows the Nearmap Self Service Portal. The navigation bar includes links for Dashboard, Account, Users, Usage, and API Access. A red arrow points to the 'Go to MapBrowser' link, which is accompanied by a location pin icon. Below the navigation bar, the 'Users' section is visible, showing 'Unlimited user licenses' and 'Viewing account: nmtestNearmap Pty Ltd Test'. A table lists users with columns for First Name, Last Name, Email, License, Status, Last Login, and Admin actions.

First Name	Last Name	Email	License	Status	Last Login	Admin...
[redacted]	[redacted]	[redacted]	[redacted]	Enabled	2020-10-13	[eye icon] [pencil icon]
[redacted]	[redacted]	[redacted]	[redacted]	Enabled	2020-10-21	[eye icon] [pencil icon]

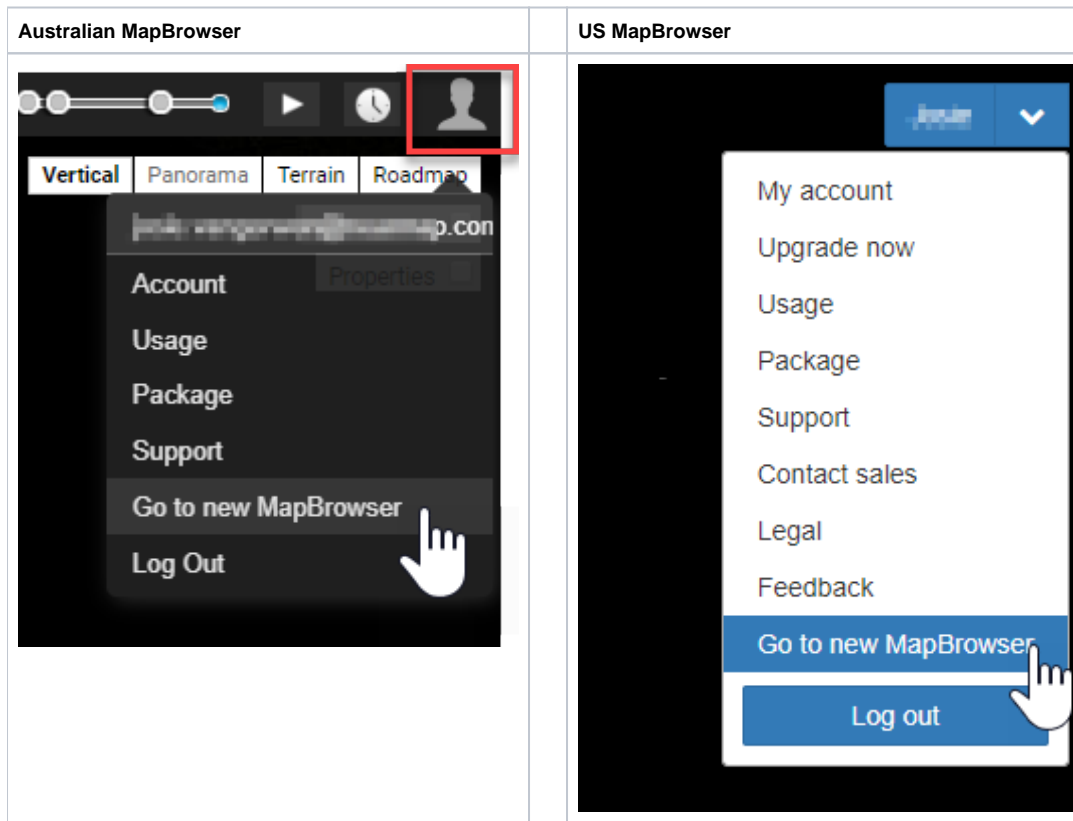
6. From Knowledge Hub



The screenshot shows the Nearmap Knowledge Hub. The navigation bar includes links for GETTING STARTED, TECHNICAL BLOGS, and USEFUL LINKS. A red arrow points to the 'TECHNICAL BLOGS' menu, which is open and shows options: OPEN MAPBROWSER, REQUEST SUPPORT, NEARMAP.COM, SYSTEM STATUS, and PRODUCT NEWS. A search bar is visible at the bottom of the page.

7. From MapBrowser Classic

If you're using Classic MapBrowser, you can switch to the New MapBrowser at any time. Click the Account drop-down menu, which is found in the top right-hand corner, and selecting "Go to new MapBrowser":



New MapBrowser will open in a new browser window at the same location, date, and zoom level you were viewing in the MapBrowser Classic.

Login Credentials

If you are not already logged in, you will need to enter your Nearmap username and password.

Refer to [Sign In and Sign Out](#)