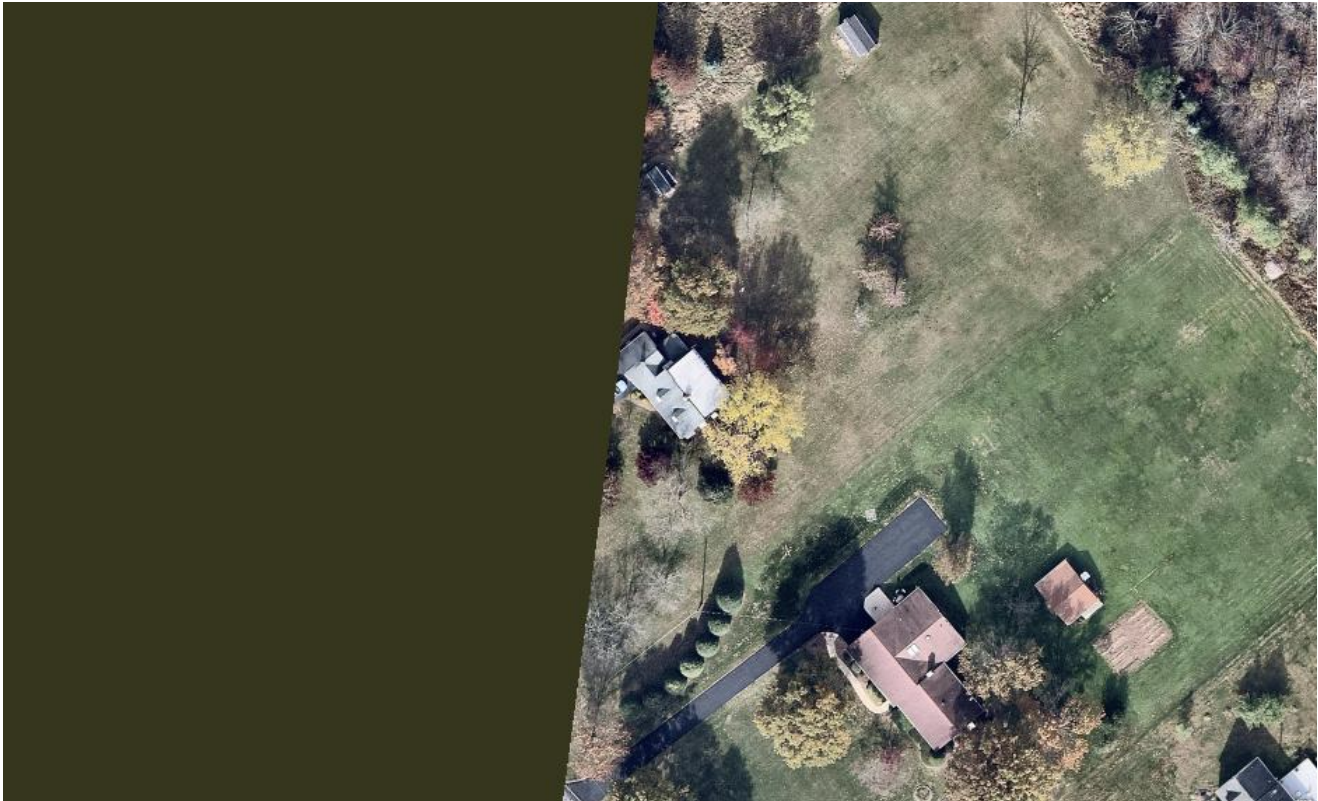


Exclude Background Imagery

When using the TMS API, Nearmap returns Nearmap vertical imagery in the areas where we have coverage, and in areas where we do not, Nearmap returns tertiary satellite imagery if it's available.

At the edges of Nearmap surveys the background is filled in with the third-party satellite imagery. At high zooms, Nearmap imagery is clear and the details are crisp, while the third-party imagery appears pixelated or blurry:



The tertiary satellite layer is provided by default when we do not have any specific coverage, but you can adjust your [TMS request](#) to exclude this background.

When you exclude the background you will get Nearmap imagery without the blurred/pixelated satellite imagery background, or, if there is no available Nearmap imagery, you will get an HTTP 404 error code.

To exclude the background add "&exclude=background" to your TMS request.

Example 1 - Partial Nearmap Coverage

The following examples are standard TMS requests, which return a single tile with half Nearmap imagery and half satellite imagery:

- US: https://us0.nearmap.com/maps?x=152986&y=197356&z=19&nml=v&version=2&httpauth=false&apikey=YOUR_API_KEY
- AU: https://au0.nearmap.com/maps?x=1925772&y=1256011&z=21&nml=v&version=2&httpauth=false&apikey=YOUR_API_KEY

If you add "&exclude=background" to the TMS request, you will only see the Nearmap imagery part:

- US: https://us0.nearmap.com/maps?x=152986&y=197356&z=19&nml=v&version=2&httpauth=false&exclude=background&apikey=YOUR_API_KEY
- AU: https://au0.nearmap.com/maps?x=1925772&y=1256011&z=21&nml=v&version=2&httpauth=false&exclude=background&apikey=YOUR_API_KEY

Example 2 - No Nearmap Coverage



The following examples are standard TMS requests, which return a single tile with satellite imagery and no Nearmap imagery:

- US: https://us0.nearmap.com/maps?x=152987&y=197300&z=19&nml=v&version=2&httpauth=false&apikey=YOUR_API_KEY
- AU: https://au0.nearmap.com/maps?x=1925772&y=1256009&z=21&nml=v&version=2&httpauth=false&apikey=YOUR_API_KEY

If you add "&exclude=background" to the TMS request, you will receive no imagery, instead you will get an error (HTTP 404):

- US: https://us0.nearmap.com/maps?x=152987&y=197300&z=19&nml=v&version=2&httpauth=false&exclude=background&apikey=YOUR_API_KEY
- AU: https://au0.nearmap.com/maps?x=1925772&y=1256009&z=21&nml=v&version=2&httpauth=false&exclude=background&apikey=YOUR_API_KEY