

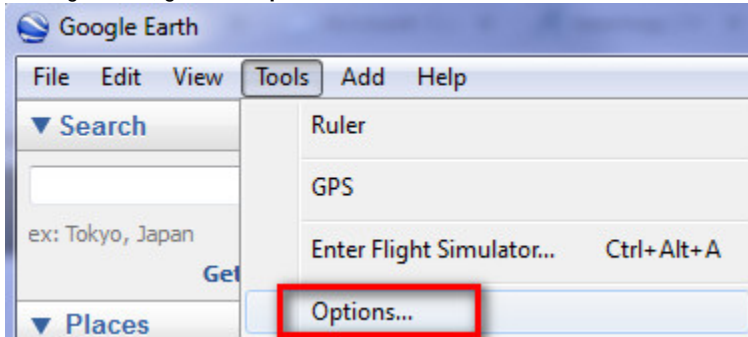
Google Earth - KML Integration

It is easy to access Nearmap imagery through Google Earth® or Google Earth Pro®.

Please note that at this time, only the most recent image capture is available for a given location.

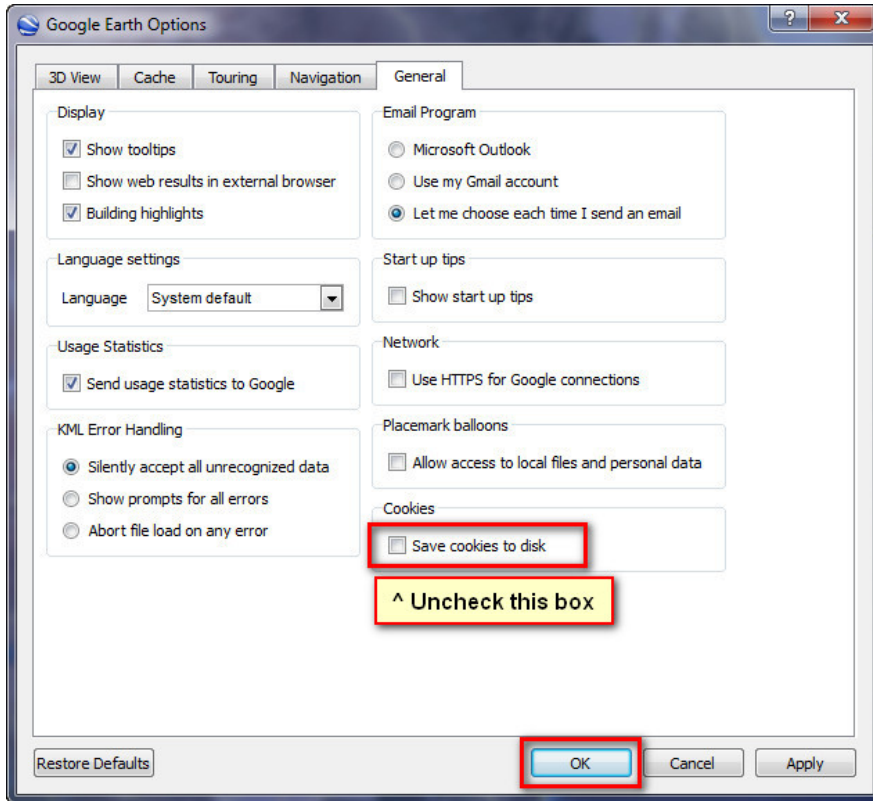
With most subscriptions, it is not possible to be logged in to both the online MapBrowser and Google Earth at the same time. If you do, you will need to close both packages in order to access Nearmap through Google Earth again. If you find that Google Earth is not accepting your login credentials, please make sure that you have followed Step 3.

1. In Google Earth, go to the **Options** menu.

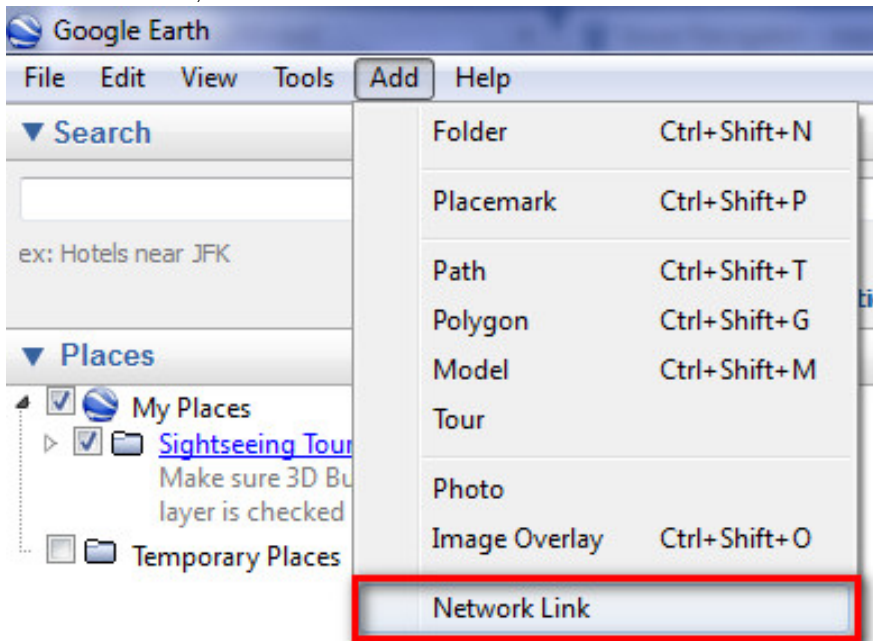


2. Switch to the **General** tab.
3. Uncheck the **Save cookies to disk** box and click **OK**. If you do not do this, you may lose the ability to access Nearmap via Google Earth as soon as you next login to the MapBrowser. If that happens, you will need to manually delete Google Earth's "cookies" file and restart Google Earth. On Windows 7, this is usually found at:

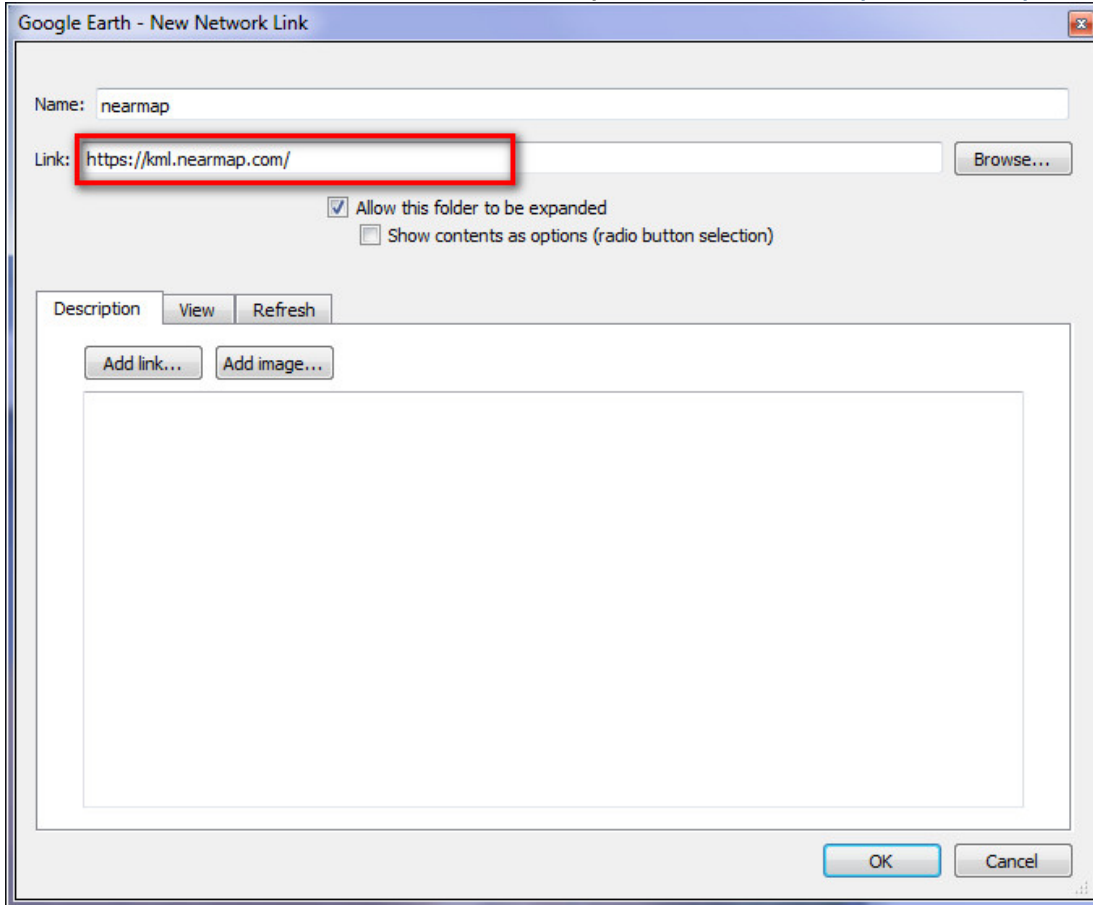
C:\Users\YOUR_USERNAME\AppData\LocalLow\Google\GoogleEarth\cookies



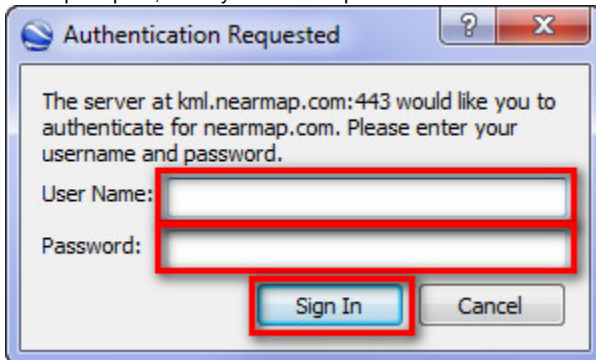
4. From the **Add** menu, select **Network Link**.



5. In the **Network Link** window, at the **Name** field, enter **Nearmap**. At the **Link** field, enter **https://kml.nearmap.com/**.



6. When prompted, enter your Nearmap **User Name** and Password, and click **Sign In**.



You should now see Nearmap appear as a layer. The imagery shown for a given location is the most recent Nearmap image available for that location; previous captures cannot currently be accessed in Google Earth. Since low zoom levels may include imagery from many dates, zoom in close to a location of interest to be sure that you're seeing the appropriate date for its capture.

